

**Rabbit anti-human Chemokine (C-C motif) ligand 18 (CCL18) monoclonal antibody, clone 12B9**  
**Catalog Number: R16001MB9**



**General Information**

<b>Immunogen</b>	Full length recombinant human CCL18 protein
<b>IgG type</b>	Rabbit IgG
<b>Clonality</b>	monoclonal
<b>Affinity</b>	$5.31 \times 10^{-10}$ M
<b>Applications</b>	TIA, ELISA, WB
<b>Pairing antibody</b>	R16001MF3, R16001MG8
<b>Specificity</b>	Human CCL18, minimum cross reactivity to other CC chemokines
<b>Formulation</b>	0.22 $\mu$ M filtered solution of PBS, pH 7.4
<b>Purity</b>	> 95% determined by SDS-PAGE
<b>Storage</b>	$\leq -20$ °C for 1 year or 4 °C for 6 weeks

**Abbreviations:**

ELISA: Enzyme-linked immunosorbent assay; ITA: immunoturbidimetric assay; IP: immunoprecipitation; IHC: immuno-histochemistry; IF: immunofluorescence. WB: western blot;

**Background**

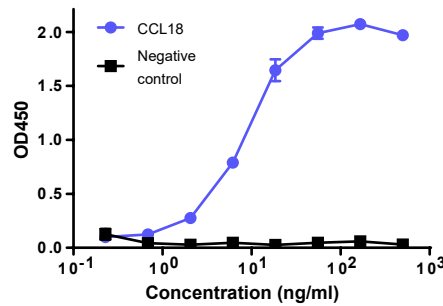
Chemokine (C-C motif) ligand 18 (CCL18) is a 69 amino acid residue cytokine matured from an 89 amino acid precursor protein found only in human. It belongs to the CC chemokine family, with putative molecular weight of 7.8 KD. Its synonyms are PARC, DC-CK1, AMAC-1, and MIP-4. CCL18 is produced majorly by antigen-presenting dendritic cells, monocytes, and macrophages. Its production is regulated by IFN-gamma, IL-10, IL-4, and IL-13. Recently three receptors have been characterized for CCL18: PITPNM3, GPR30, and CCR8. CCL18 primarily regulates recruitment of the adaptive immune system and attracts lymphocytes including T cells, B cells, and dendritic cells. It is involved into fibrotic lung diseases, allergy, autoimmune diseases, breast cancer, and acute lymphocytic leukemia.

**Preparation**

Monoclonal antibody is produced by immunizing rabbit with full length recombinant human CCL18 and purified using protein A resin.

**Application**

**Sandwich ELISA**



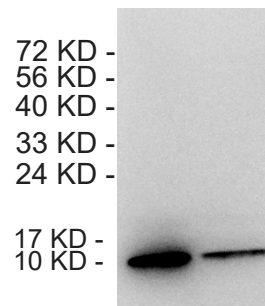
**ELISA conditions**

- capture antibody: rabbit anti-CCL18 monoclonal antibody (clone 6E12, R16001ME12) at 2  $\mu$ g/ml
- detection antibody: rabbit anti-CCL18 monoclonal antibody (clone 12B9, R16001MB9) at 0.5  $\mu$ g/ml

**Suggested pairs**

Capture antibody	Detection antibody
R16001MF3, R16001MG8	R16001MB9
R16001MB9	R16001MG8

**Western blot**



**Western blot conditions**

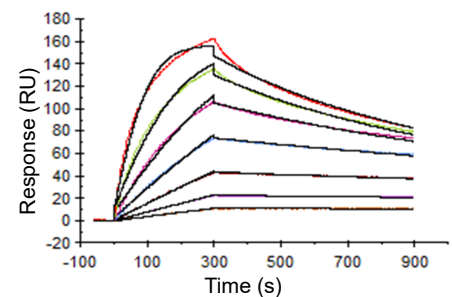
Lanes: recombinant human CCL18 protein at 50 ng (left) and 20 ng (right) per lane.  
 Antibody concentration: 1  $\mu$ g/ml

Blocking and antibody dilution buffer is 5% skim milk (w/v), 1x TBS, 0.05% Tween-20.

**Affinity**

$K_{on}$ :  $6.84 \times 10^5$ /Ms  
 $K_{off}$ :  $3.62 \times 10^{-4}$ /s

KD:  $5.31 \times 10^{-10}$  M



**Research Use or Further Manufacturing Only**

**Rabbit anti-human Chemokine (C-C motif) ligand  
18 (CCL18) monoclonal antibody, clone 12B9**  
Catalog Number: R16001M12B9



---

### **Storage**

This antibody is shipped at 4 °C. This product is stable for 12 months from date of receipt when stored at -20 °C to -70 °C. Avoid freeze/thaw cycles.

### **Hazard/Biohazard**

This antibody contains 0.09% sodium azide as preservative. Please handle and dispose the product properly. No known biohazard is associated with this product.

### **Research Use or Further Manufacturing Only**

---

55 Union Street, Worcester, MA 01608 Tel: 1-508-753-4822 Fax: 1-973-506-2634 E-mail: [customer@yurogen.com](mailto:customer@yurogen.com)  
<http://www.yurogen.com/>